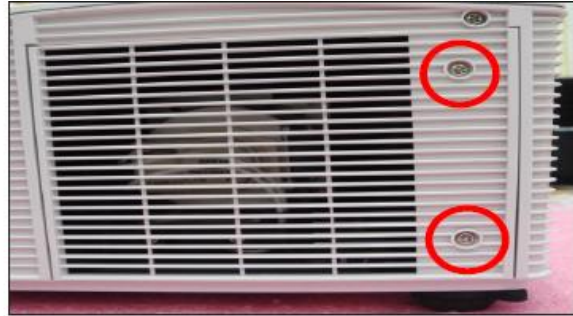


Disassemble the Lamp Module

1. Loosen 2 screws (red circles) on the Lamp Cover.



2. Separate the Lamp cover and Lamp cover strap (green squares).



LAMP COVER

3. Loosen 2 screws (yellow circles) on the Lamp Module.



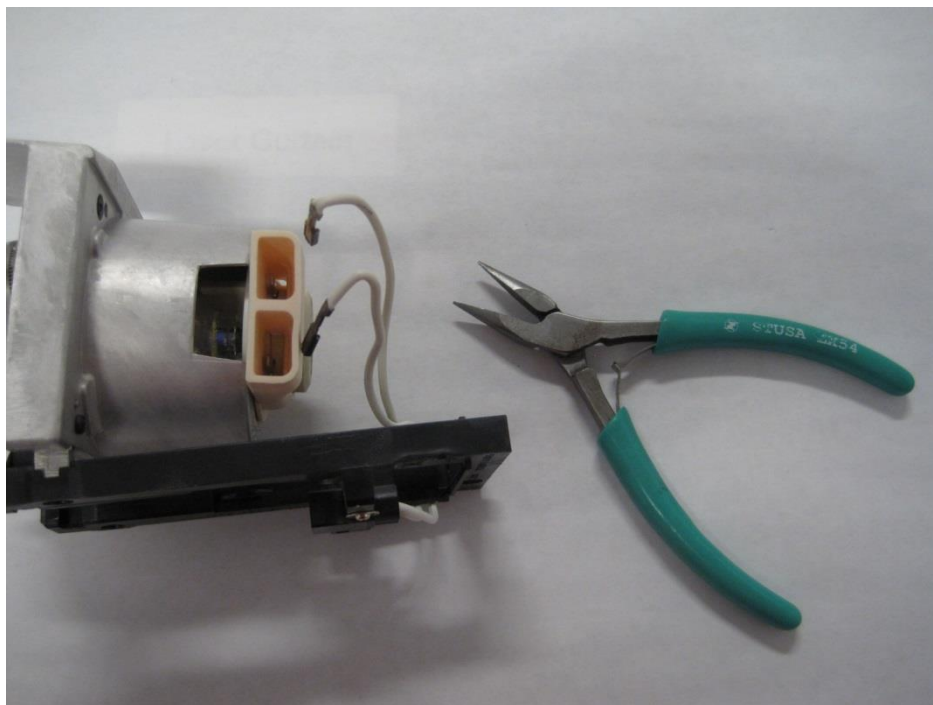
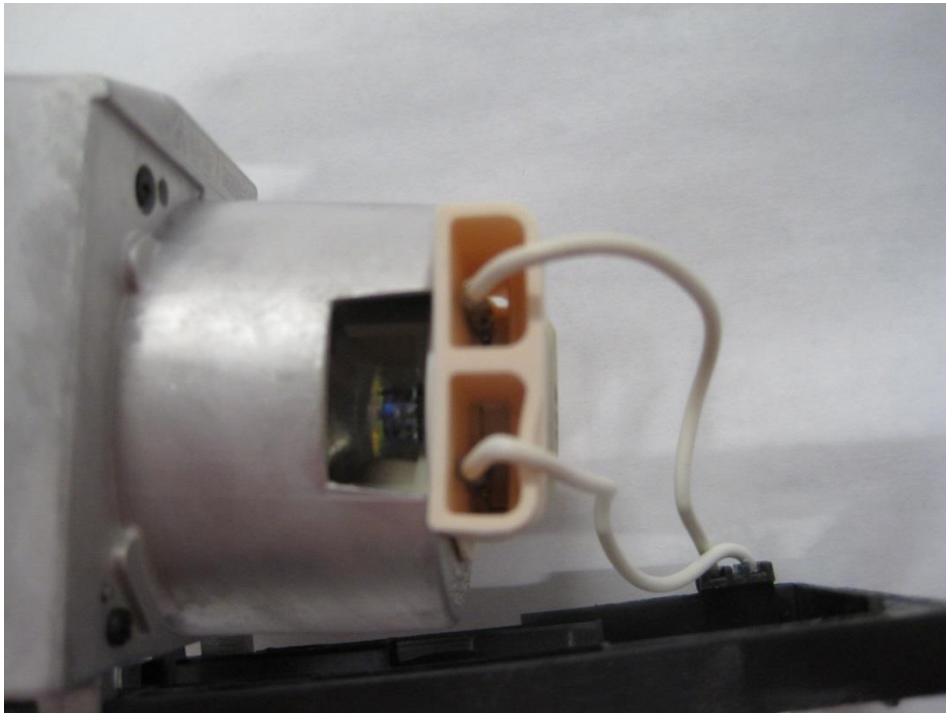
4. Slide out the Lamp Module.

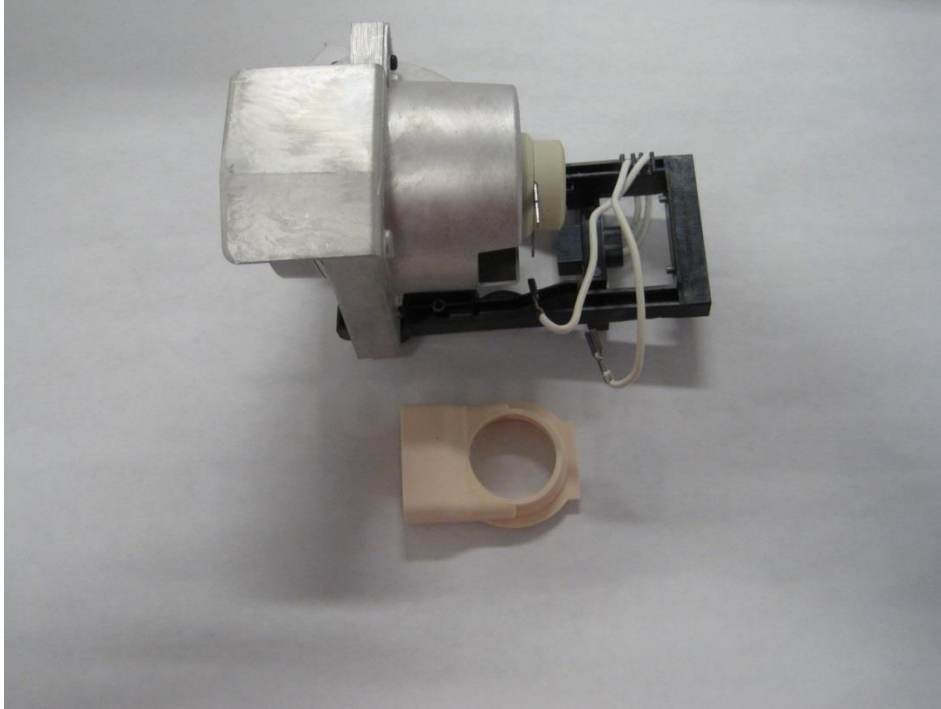


LAMP MODULE

Projector Bulb Replacement Process

Note: Please wear cotton gloves while replacing the bulb. The oil from your skin can shatter the bulb.



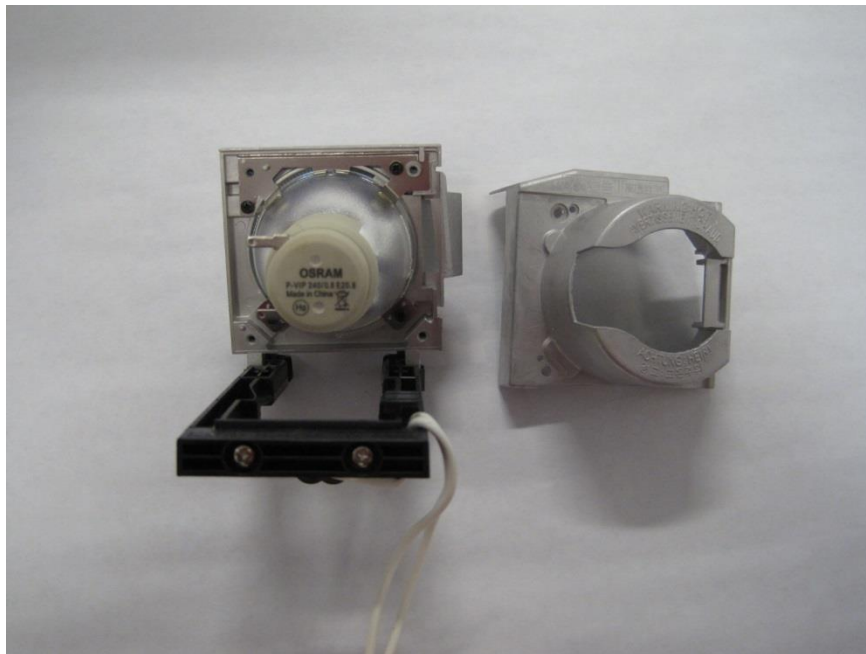


1. Remove the 2 wires from bulb terminals

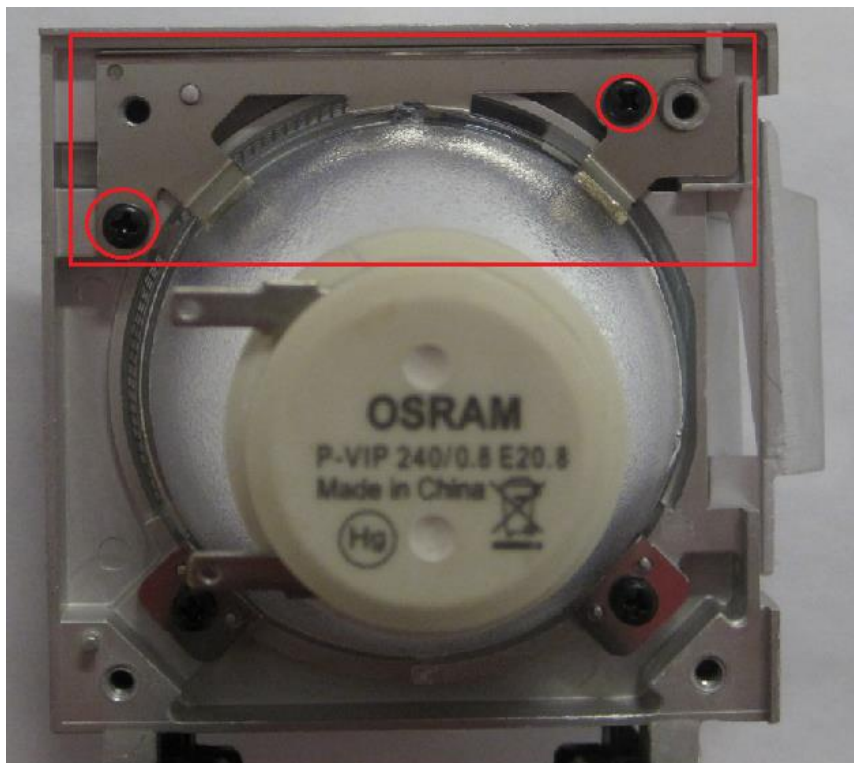
Next remove the rubber boot from the base of the bulb by lifting from the right side opposite the terminals



2. Remove 4 screw that secure the housing

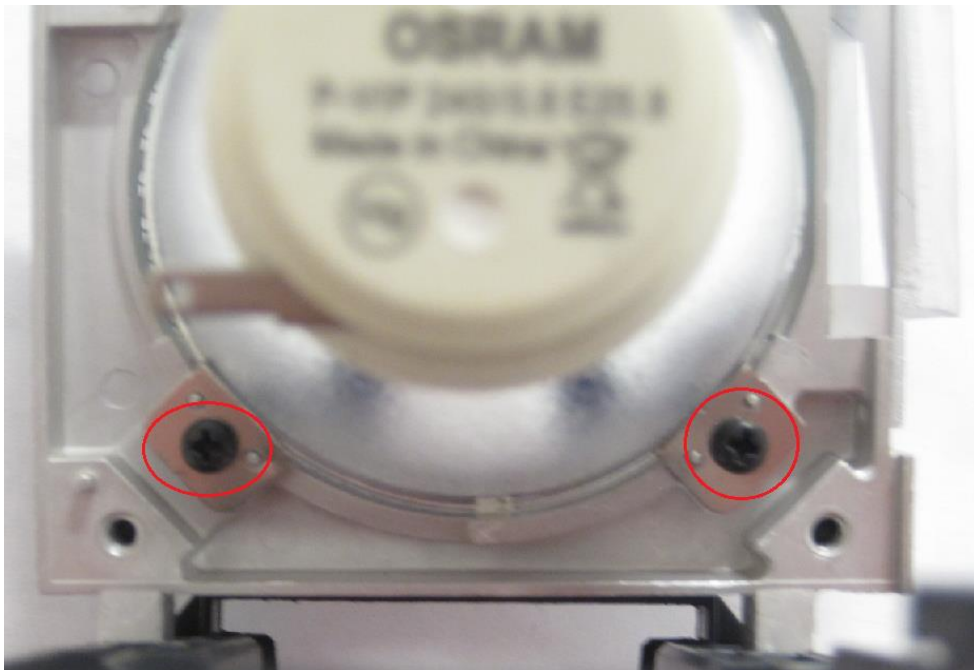


housing

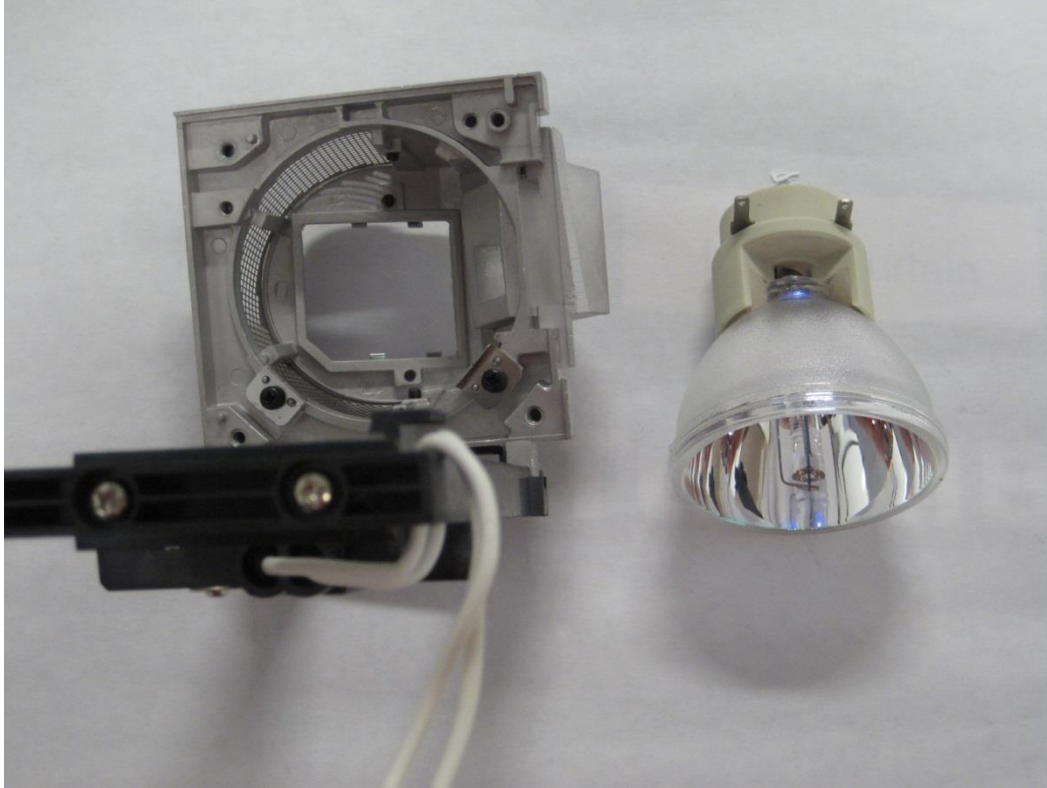


3. Remove

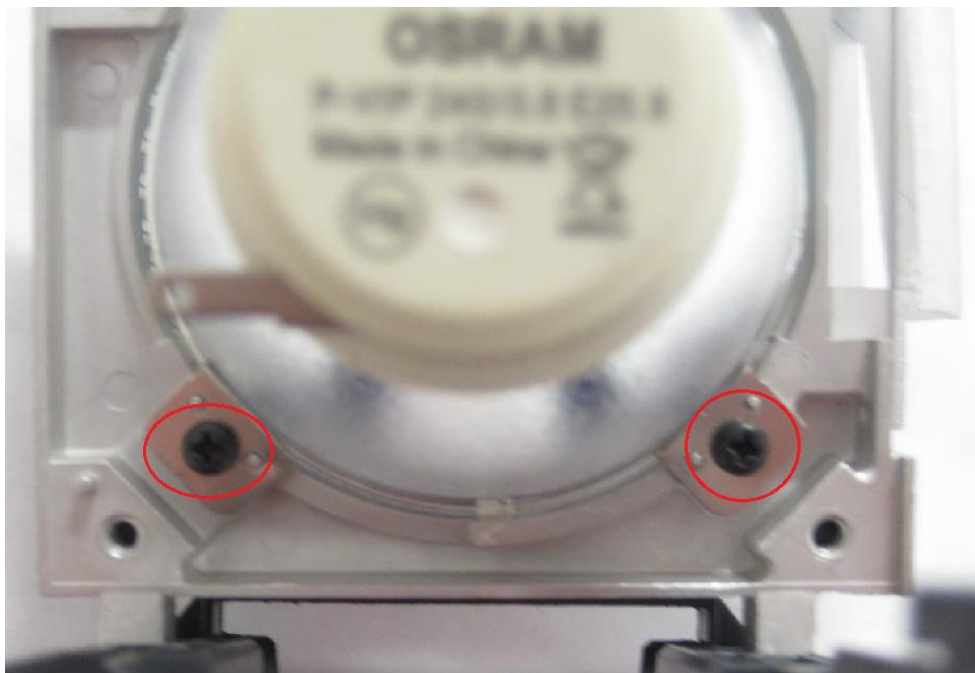
4. Remove the top 2 screws and retainer clip



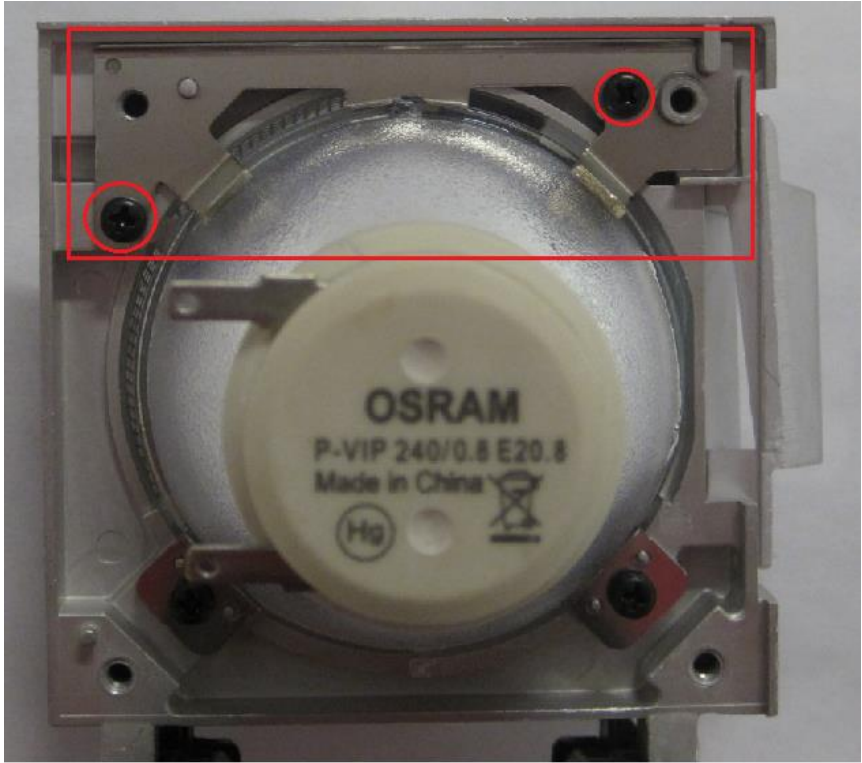
5. Loosen the bottom 2 screws enough to free the bulb from the retaining clips



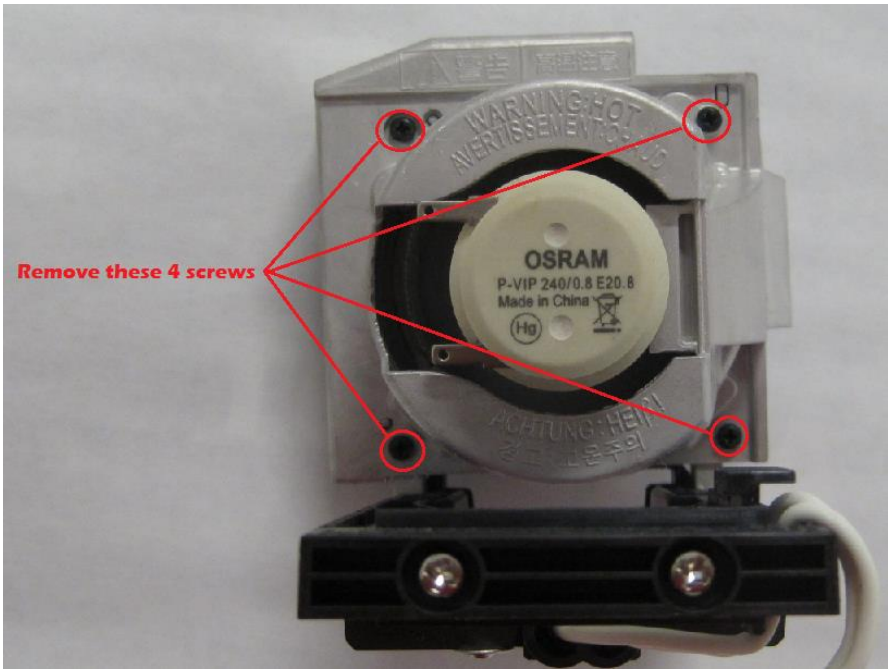
6. Tilt bulb back and remove from housing assembly.



7. Place the new bulb into the housing and slightly tighten bottom 2 screws

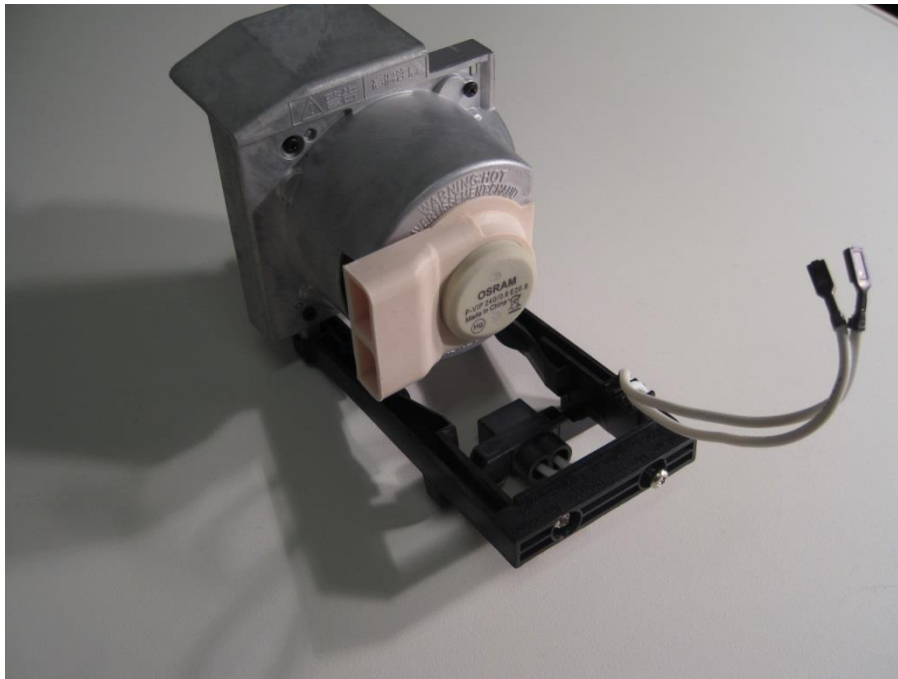


the top clip and

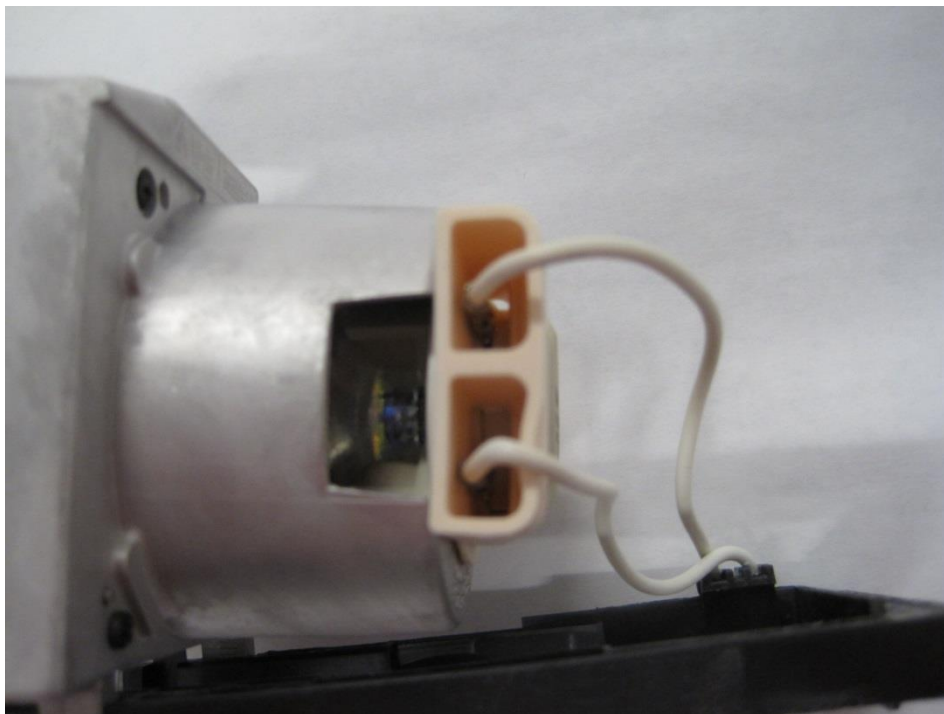


8. Replace retaining screws

9. Re-install the rear housing



10. Re-install the rubber boot from the terminal side first. Using a small flat blade screwdriver guide the bottom side of the rubber boot in place. Then do the same for the top side



11. Re-install the cables to the bulb terminals, making sure they are fully engaged